

# Technical Data Sheet

---

## Product Code

MT60

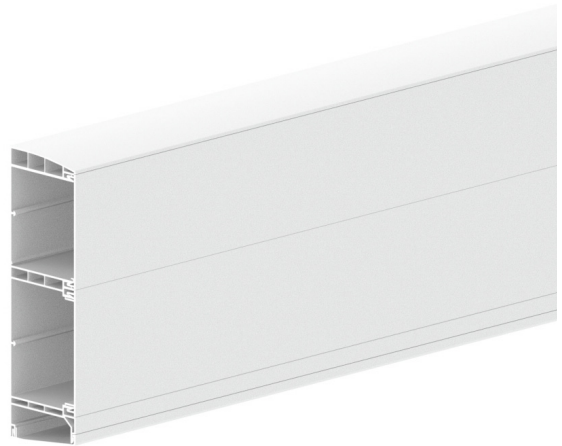
## Product Description

Elite 60 perimeter trunking

## Product Dimensions

200 x 63mm Profile

3 Metre Length



## Applicable Standards:

BS6701 (Telecommunications equipment and cabling)  
ISO/IEC 11801 (ED2.0 Amd 2) (Generic cabling for customers premises)  
Cenlec (BSEN50173 Part 1/2, BSEN50174-2) (Generic cabling and installation)  
BS4678 Pt 4 (Cable Trunking)  
BS7671 (IEE Regulations) (Wiring Regulations)

## Product Specification:

Description: 3 compartment perimeter trunking  
Material Compliance: RoHS & WEEE Compliant  
Manufactured: Extruded from Pellets

## Material Specification:(if applicable)

Description: A Calcium/Zinc stabilised, medium/  
high impact uPVC.

PROPERTY	Standard	UNITS	VALUE
Specific Gravity	BS2782 620A	g/cc	1.50
Vicat Softening Point	BS2782 (B50) 1990 120B	°C	78
Tensile Strength @ Yield	BS2782 320A-F	MPa	40

The above are typical test results and do not constitute any part of a specification

## Colours:

MT60 - Pure White  
MT60LG - Light Grey  
MT60CH - Charcoal

## Base:

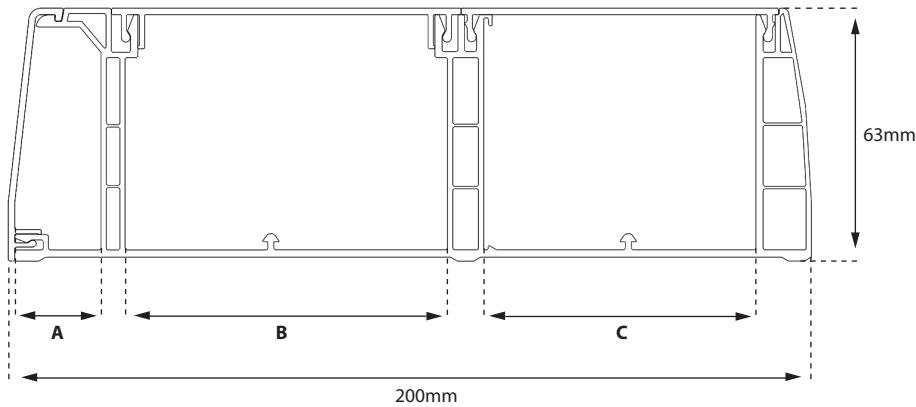
Pre Punched for wall mounting 200 mm intervals

## Screening:

MT60SD - Slide in steel screening divider top and bottom  
MT60SDE - External angle screening divider

# Technical Data Sheet

## Dimensions and Cable Capacities



Compartment width in (mm)

A	B	C
21.5	90	67.5

## Data

DATA CABLE DIAMETER (mm)	NOMINAL CSA (mm <sup>2</sup> )	COMPARTMENT A 1052mm <sup>2</sup>	COMPARTMENT B				COMPARTMENT C 3970mm <sup>2</sup>
			4609mm <sup>2</sup>	4609mm <sup>2</sup> and 25mm back box (2911mm <sup>2</sup> )	4609mm <sup>2</sup> and 35mm back box (2188mm <sup>2</sup> )	4609mm <sup>2</sup> and 50mm back box (1105mm <sup>2</sup> )	
		45% Fill (473mm <sup>2</sup> )	45% Fill (2074mm <sup>2</sup> )	45% Fill (1309mm <sup>2</sup> )	45% Fill (984mm <sup>2</sup> )	45% Fill (497mm <sup>2</sup> )	45% Fill (1786mm <sup>2</sup> )
5	19.6	24	105	66	50	25	91
5.5	23.8	19	87	55	41	20	75
6	28.3	26	73	46	34	17	63
6.5	33.2	14	62	39	29	14	53
7	38.5	12	53	34	25	12	46
8	50.3	9	41	26	19	9	35
9	63.6	7	32	20	15	7	28
10	78.5	6	26	16	12	6	22

## Power

POWER CABLE CONDUCTOR CSA(mm)	CABLE FACTOR	COMPARTMENT A 1052mm <sup>2</sup>	COMPARTMENT B				COMPARTMENT C 3970mm <sup>2</sup>
			4609mm <sup>2</sup>	4609mm <sup>2</sup> and 25mm back box (2911mm <sup>2</sup> )	4609mm <sup>2</sup> and 35mm back box (2188mm <sup>2</sup> )	4609mm <sup>2</sup> and 50mm back box (1105mm <sup>2</sup> )	
		45% Fill (473mm <sup>2</sup> )	45% Fill (2074mm <sup>2</sup> )	45% Fill (1309mm <sup>2</sup> )	45% Fill (984mm <sup>2</sup> )	45% Fill (497mm <sup>2</sup> )	45% Fill (1786mm <sup>2</sup> )
5	8.6	55	241	152	114	57	207
5.5	12.6	37	162	103	78	39	139
6	16.6	28	124	78	59	29	107
6.5	21.2	22	97	61	46	23	84